

# Grain & Feed Industry Conference

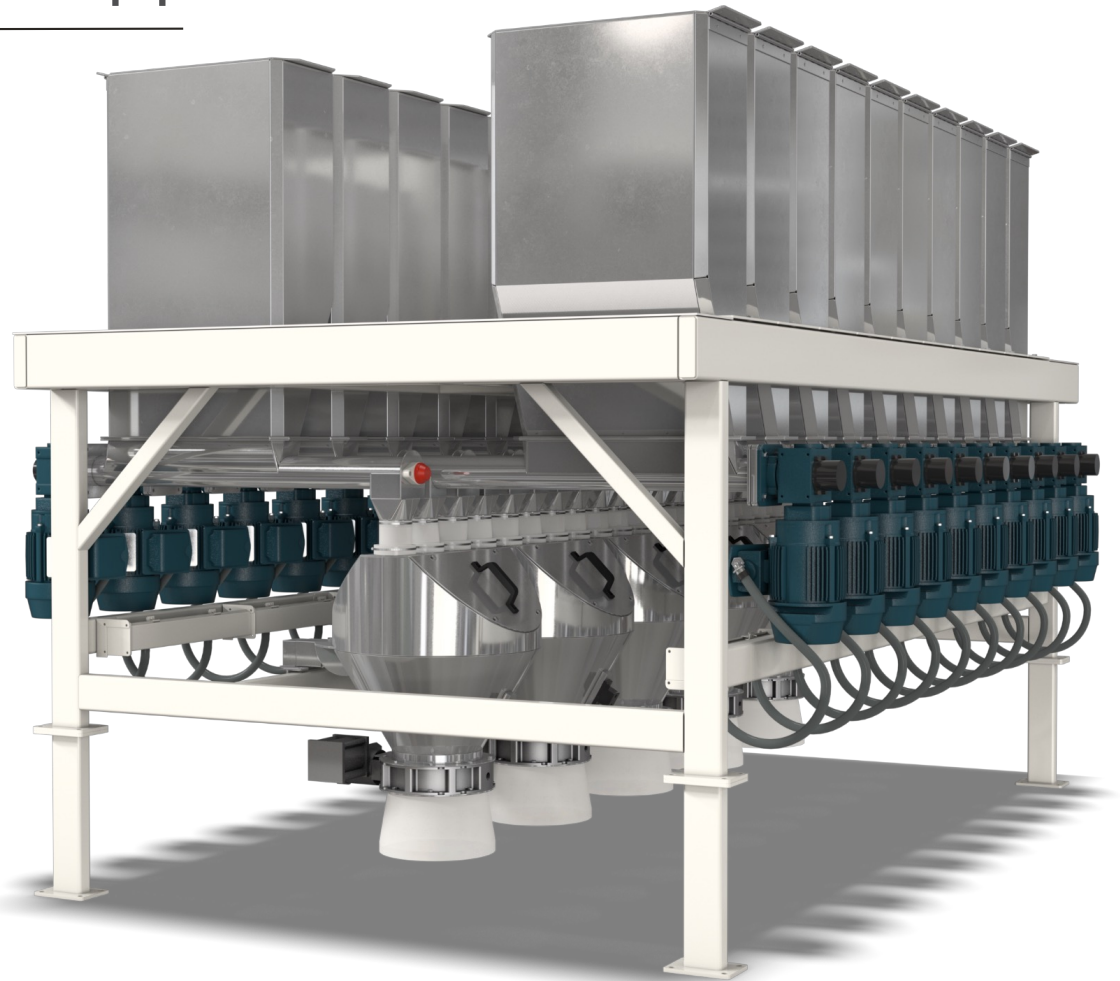
New in Technology Session



# Micro Scale with Conical Hopper

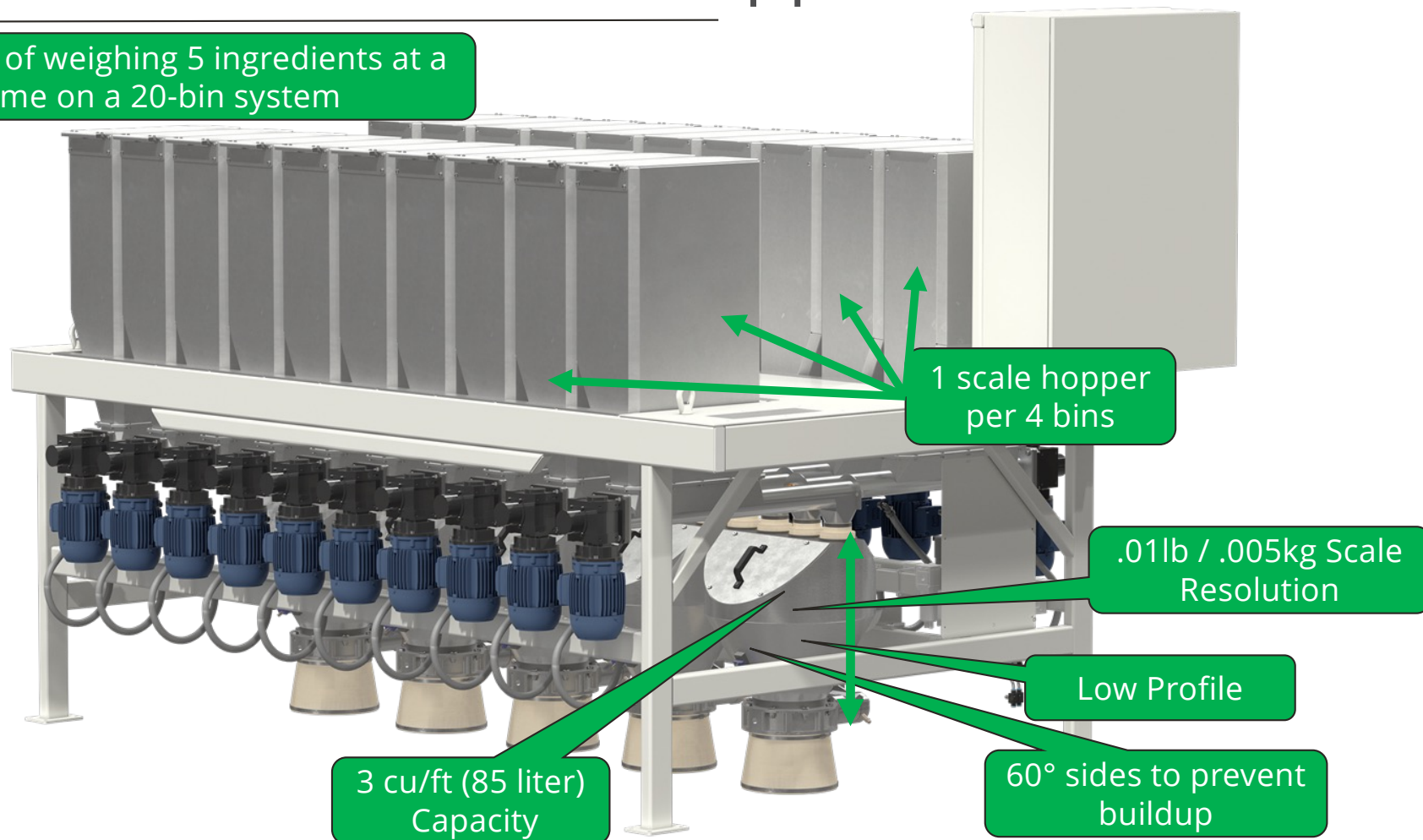
- Individual Conical Hoppers allow for high-speed weighing, small dosage weighing, and ingredient segregation (to prevent cross contamination).

Number of Ingredients:	4 to 24
Average Draw Weight:	.5 to 10 lbs
Bin Capacity:	6, 8, 10 cu/ft
Scale Display Resolution:	.01 to .02 lbs (based on environment)
Hopper Capacity:	3.0 to 18 cu/ft



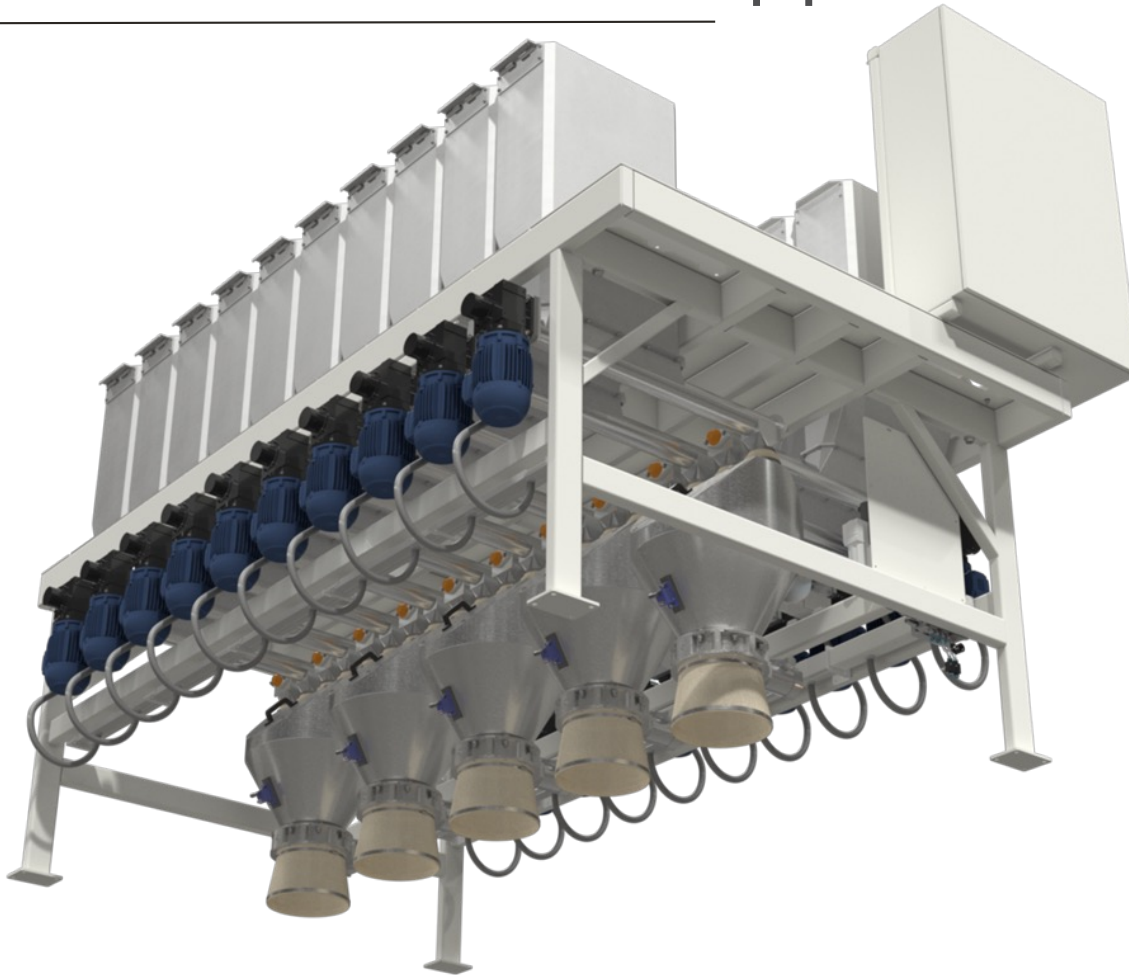
# Micro Scale with Conical Hopper

Capable of weighing 5 ingredients at a time on a 20-bin system



# Micro Scale with Conical Hopper

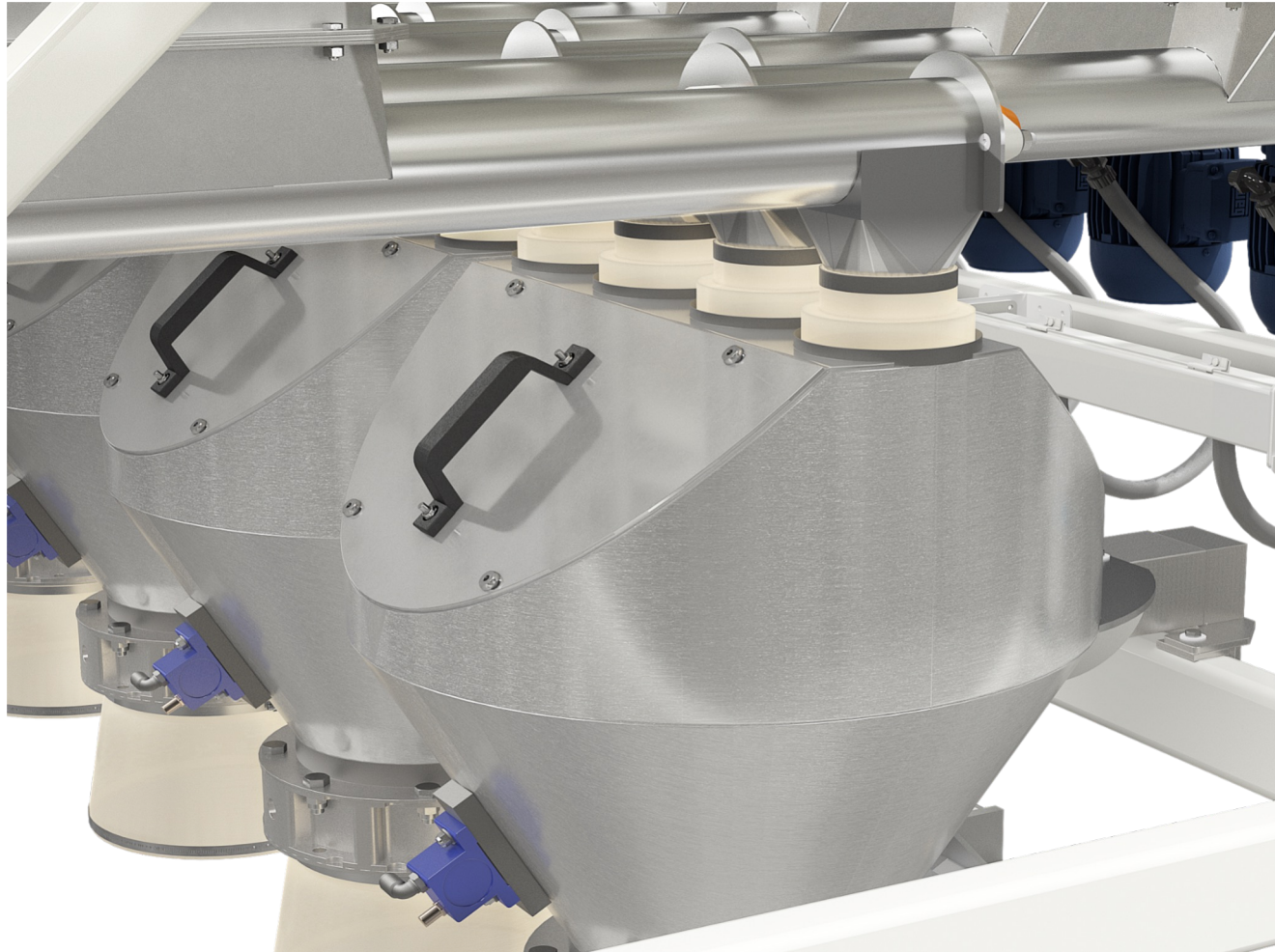
---





# Micro Scale with Conical Hopper

---



# Micro Scale with Conical Hopper

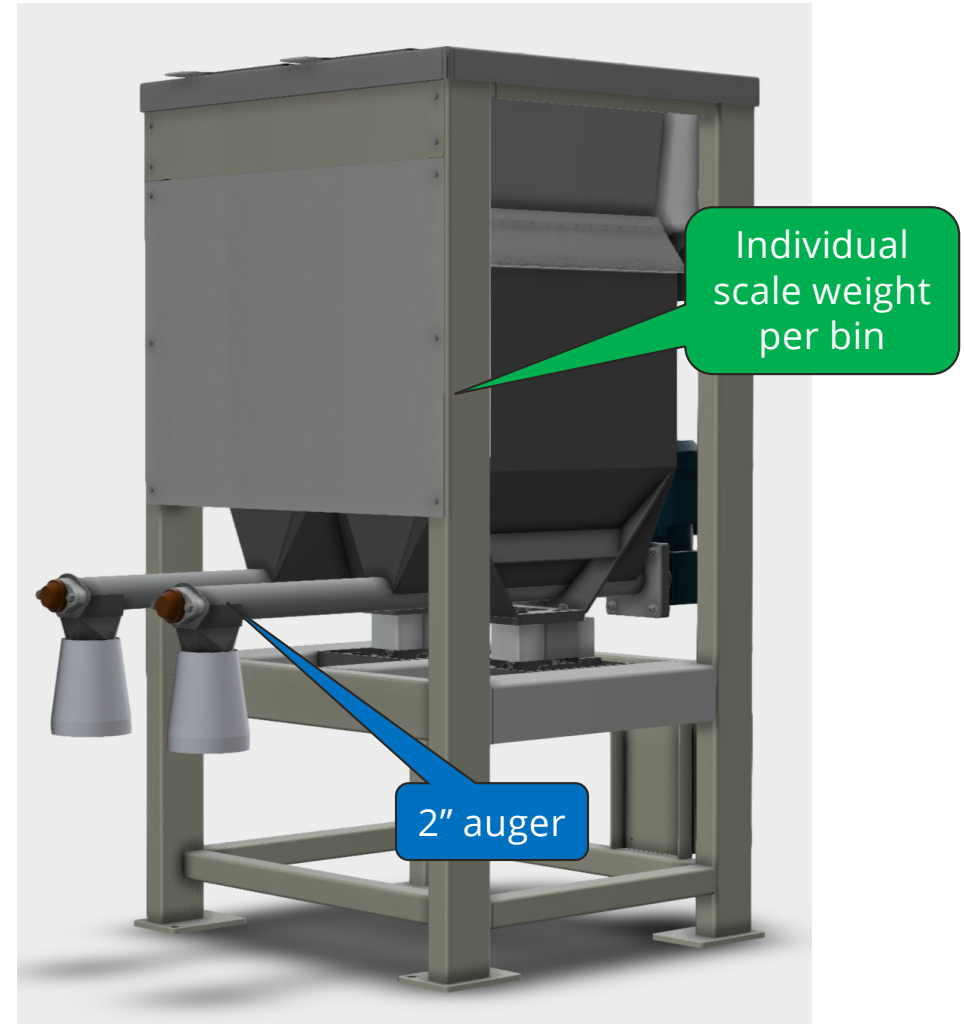
---



# Loss-in-Weight Nano Micro Scale

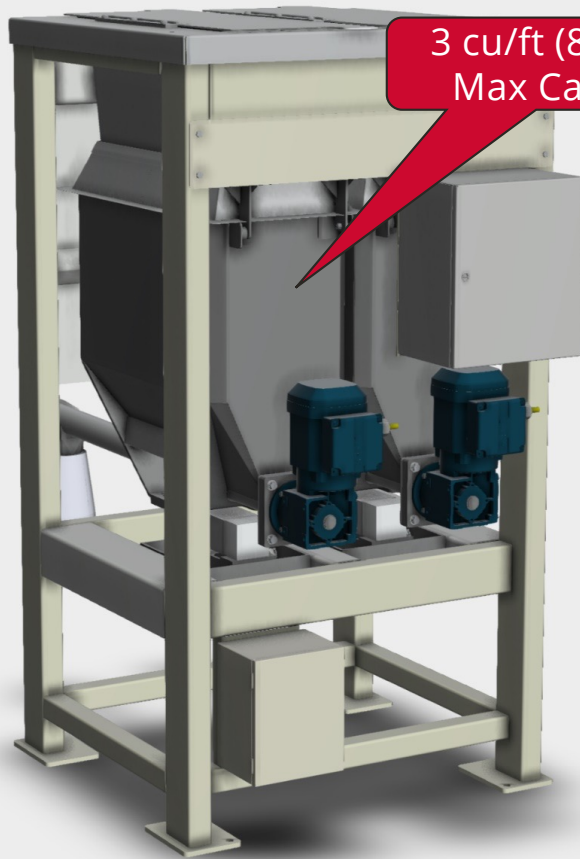
- Industries: Animal Feed, Pet Food, Premix, Food Processing
- The Nano Loss-In-Weight bins provide continuous weighed inventory.
- 2" auger for high accuracy/low inclusion ingredients

Number of Ingredients:	2 to 100
Average Draw Weight:	.2 to 20 lbs
Bin Capacity:	3 cu/ft
Scale Display Resolution:	.01 to .05 lbs (based on environment)

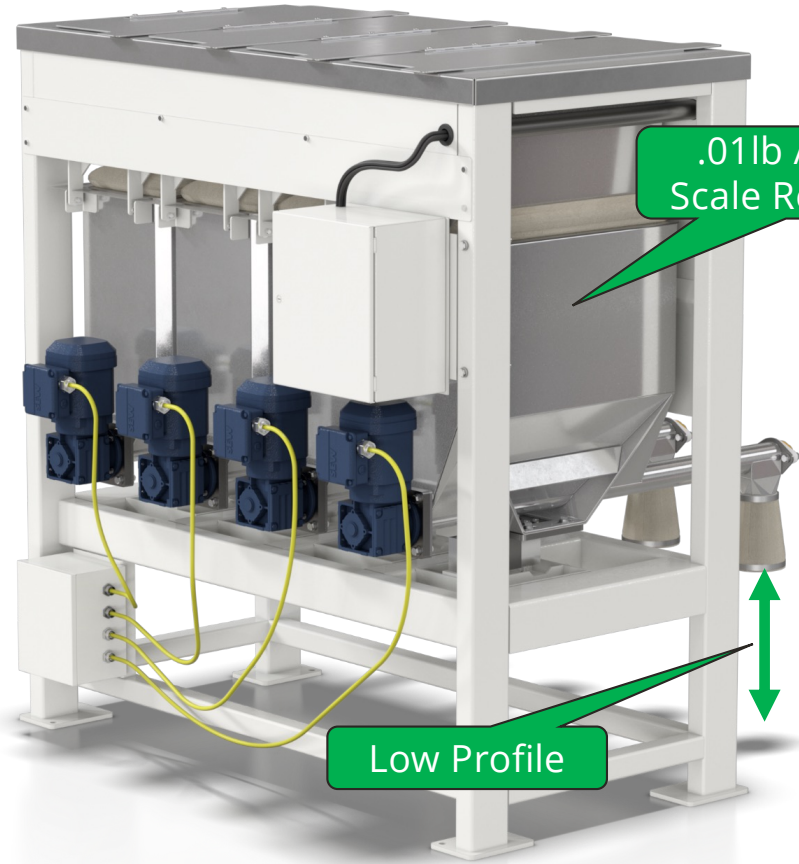




# Loss-in-Weight Nano Micro Scale



3 cu/ft (85 liter)  
Max Capacity



.01lb / .005kg  
Scale Resolution

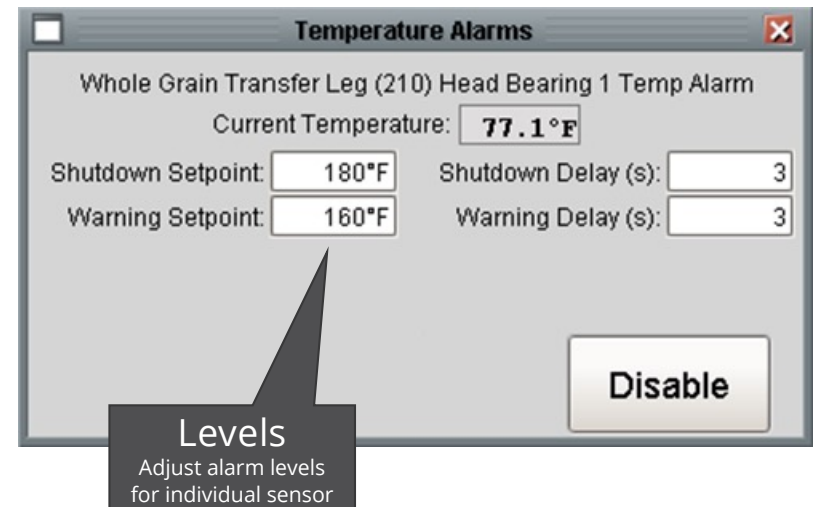
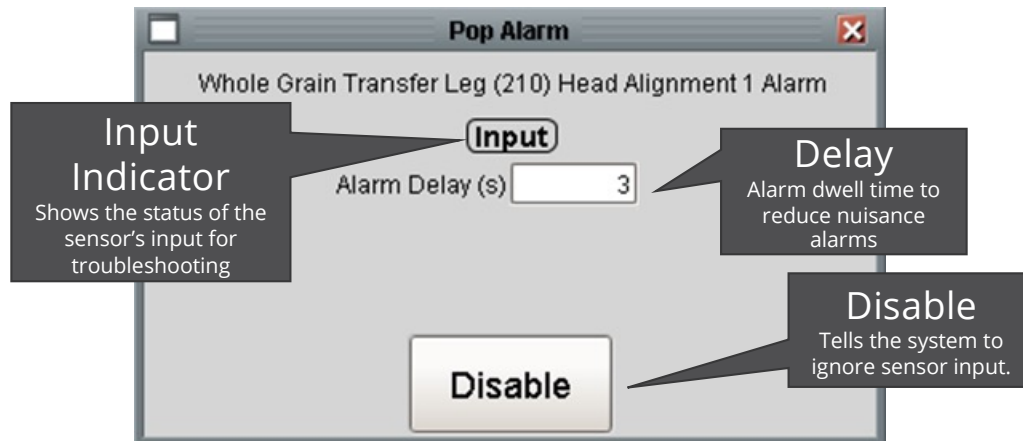
Low Profile





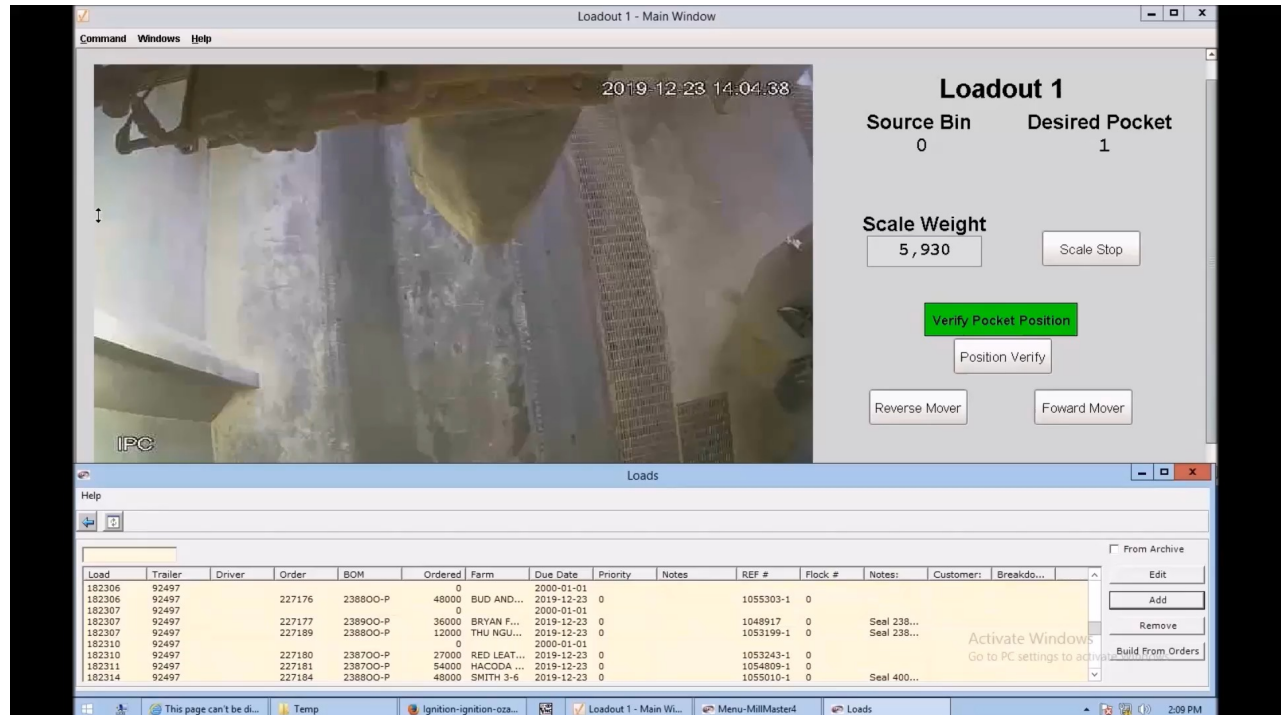
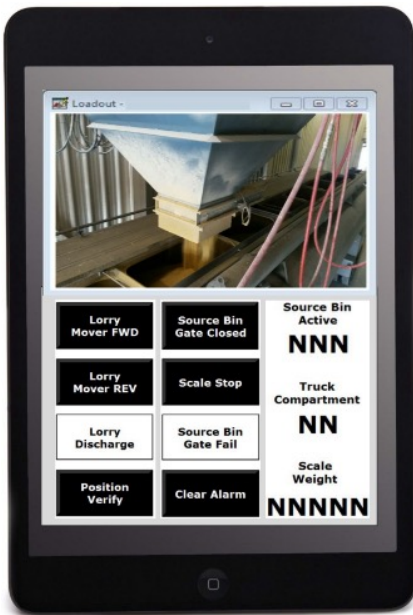
# Alarm Override

- Offers the ability to have maintenance override alarms
- Alarm automatically enables every morning
- Allows for the system to keep running while hardware failures are being addressed



# Mobile Loadout Driver Control Station

- Allows truck driver to verify truck position
- Allows load out dispatch to perform other work while drivers load their own trucks



# Loadout Laser

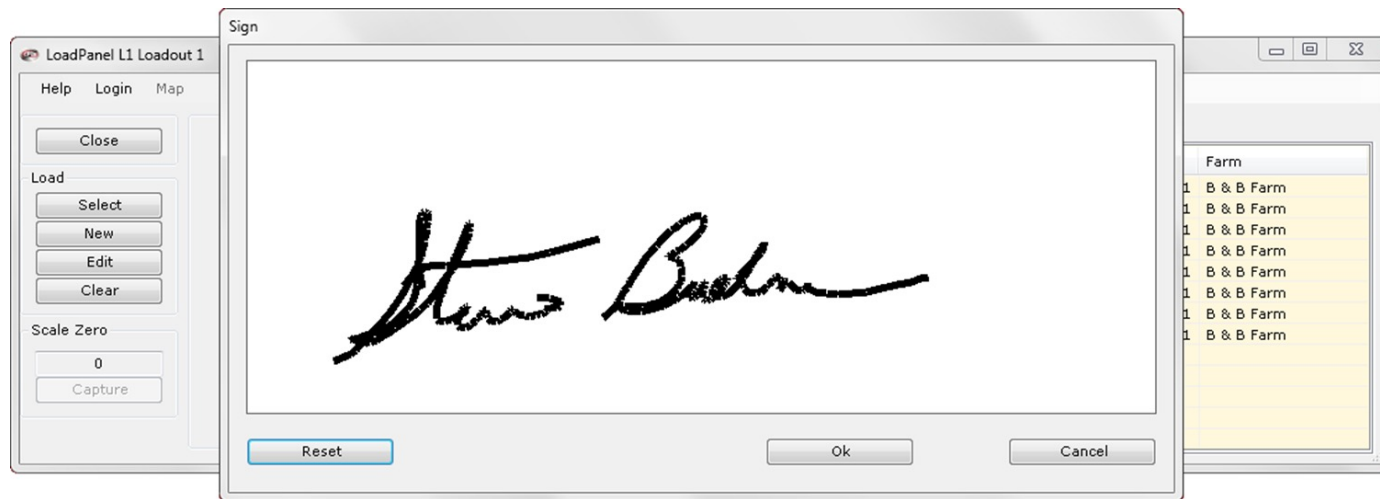
---

- Laser positioning for Lorry Scales & Shuttle Conveyor
  - Precise measurement
  - No moving parts
  - More reliable than an encoder with a wheel that can slip
  - Retains measurement even if the device is moved when power is off



# Loadout Electronic Signature

- Allows operator or truck driver to electronically sign the ticket
- Signature is stored with the ticket and can be emailed to the customer





BNE Farms  
100 Main Street  
Highland IL  
618-654-2222

Ticket Number 131  
Return Feed No

Load	125	Farm	10500 B & B Farm
Trailer	8		303 Hwy 192 East
Truck	99		
Order	188		
Recipe	90001 Duration +1		
Ordered (lb)	48000		
Shipped (lb)	47930		
Scale Zero Weight (lb)	0	Customer	10500 B & B Farm
Scale Zero Time	12/6/2018 1:09:43 AM	Driver	Cole Cole Buehne
WeighMaster	beta beta	Driver In Vehicle	
Begin Time	2/4/2019 8:03:21 PM		
Complete Time	2/4/2019 11:13:16 PM		

Pocket	Target (lb)	Amount (lb)	House	Tank	Pocket	Source	Bins	Pocket	Manual	
1	6000	6000			708			1	False	L1-S1
2	6000	5930			708			2	False	L1-S1
3	6000	6000			708			3	False	L1-S1
4	6000	6000			708			4	False	L1-S1
5	6000	6000			708			5	False	L1-S1
6	6000	6000			708			6	False	L1-S1
7	6000	6000			708			7	False	L1-S1
8	6000	6000			708			8	False	L1-S1

Notes:

**Feed Warning**

**MEDICATED:**

For Increased rate of gain and improved feed efficiency

Active Drug Ingredient:


Bacitracin Zinc.....25g/ton

**FEEDING DIRECTIONS**

DO NOT FEED TO CATTLE!!!!

THIS IS TO CERTIFY that the following described commodity was weighed, measured, or counted by a weighmaster, whose signature is on this certificate, who is a recognized authority or accuracy, as prescribed by Chapter 7 (Commencing with Section 12700) of Division 5 of the California Business and Professions Code, administered by the Division of Measurement Standards of the California Department of Food and Agriculture.

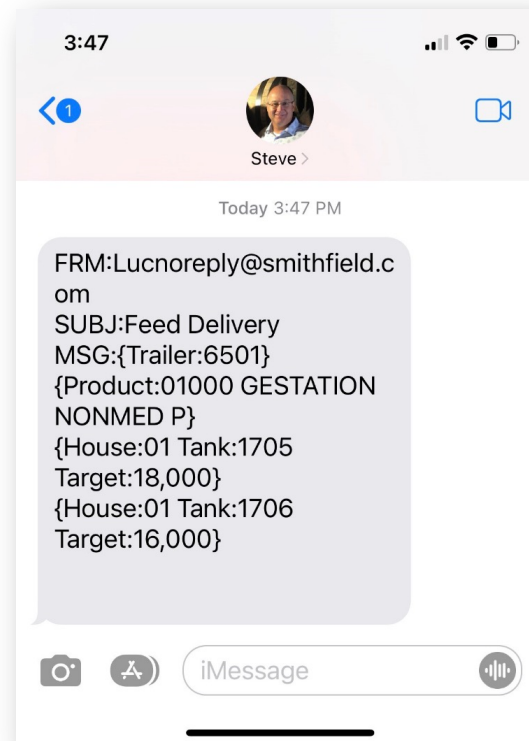
Driver Signature: \_\_\_\_\_

Weighmaster Signature: 

# Text Loadout Delivery Alert

---

- Send text alerts to customers



# Sample Bag Label

---

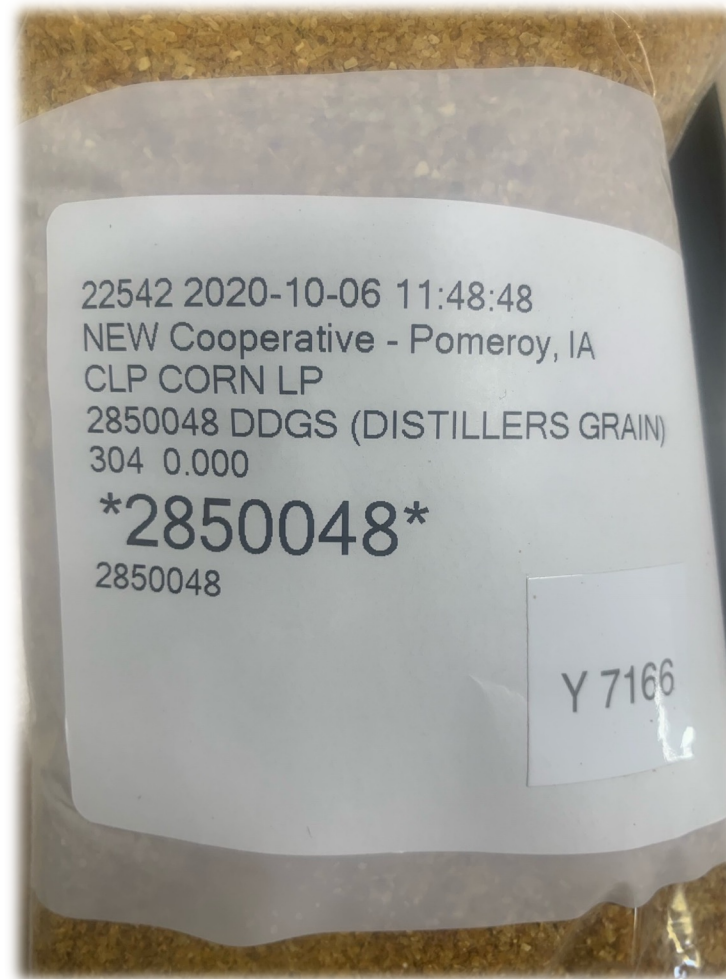
- A label can be printed for the sample

116 10/19/2016 6:08:08 PM  
7700 SELENIUM  
403 Lot2121 500  
  
7700 Lot2121



# Receiving Label

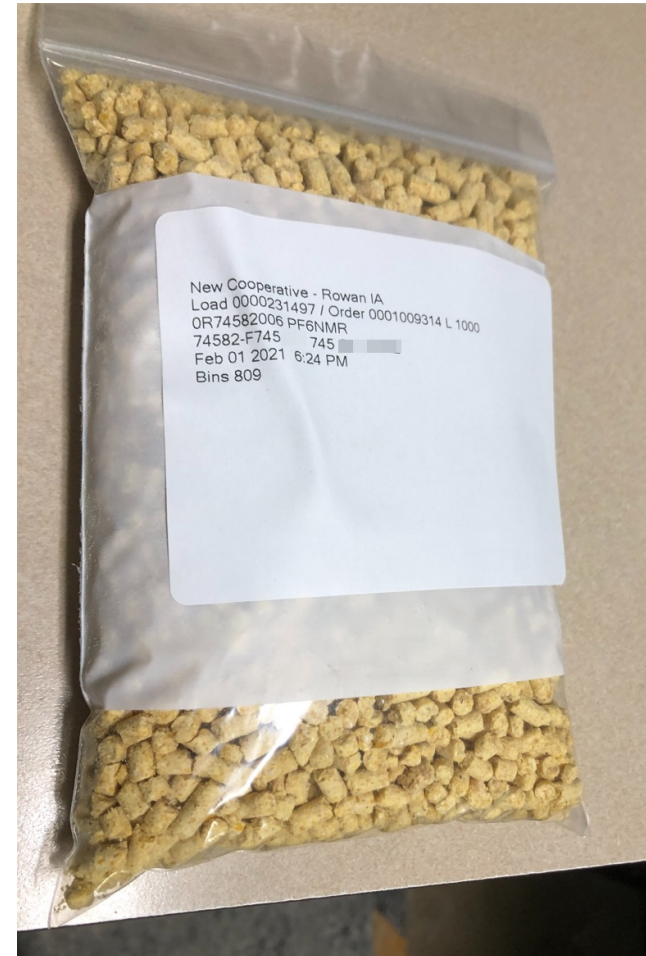
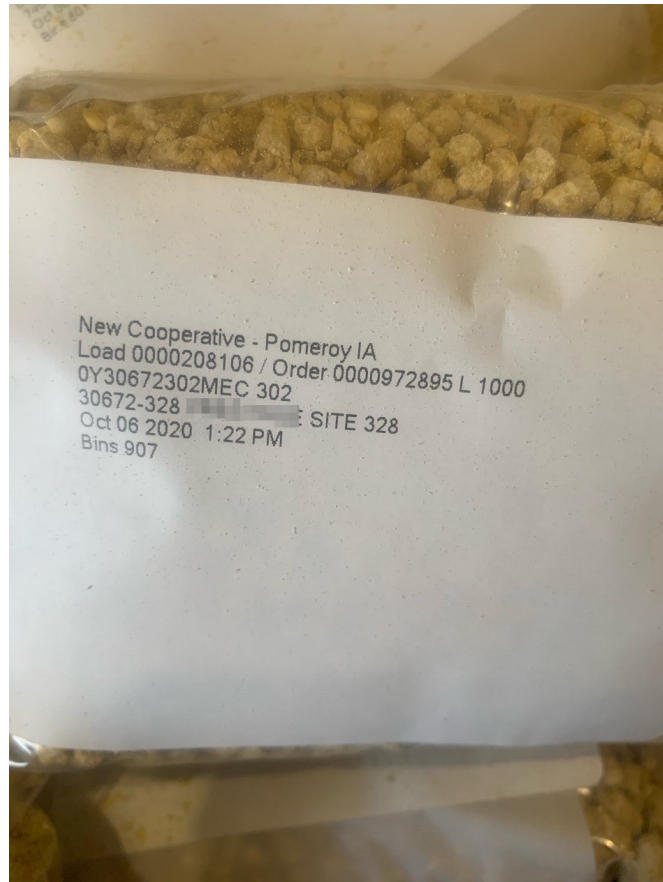
---





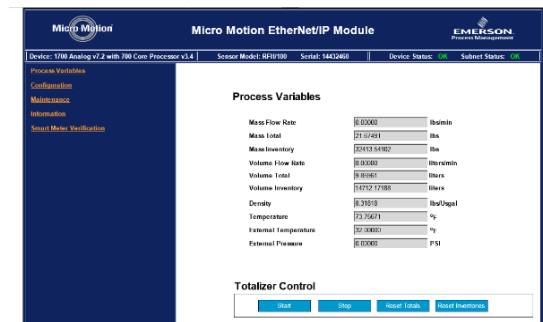
# Loadout Label

---



# Flow Meters with Integrated Communication

- Endress+Hauser & Micro Motion flow meters are available with communication modules
- An integrated Web server allows users to remotely view data, diagnostics, and configuration of the flow meter
- Allows user to see flow meter data from any device (Ex: HMI screen or mobile device)
- No more “Bucket Tests” to calibrate the automation system



---

# SLC500 to CompactLogix Conversion

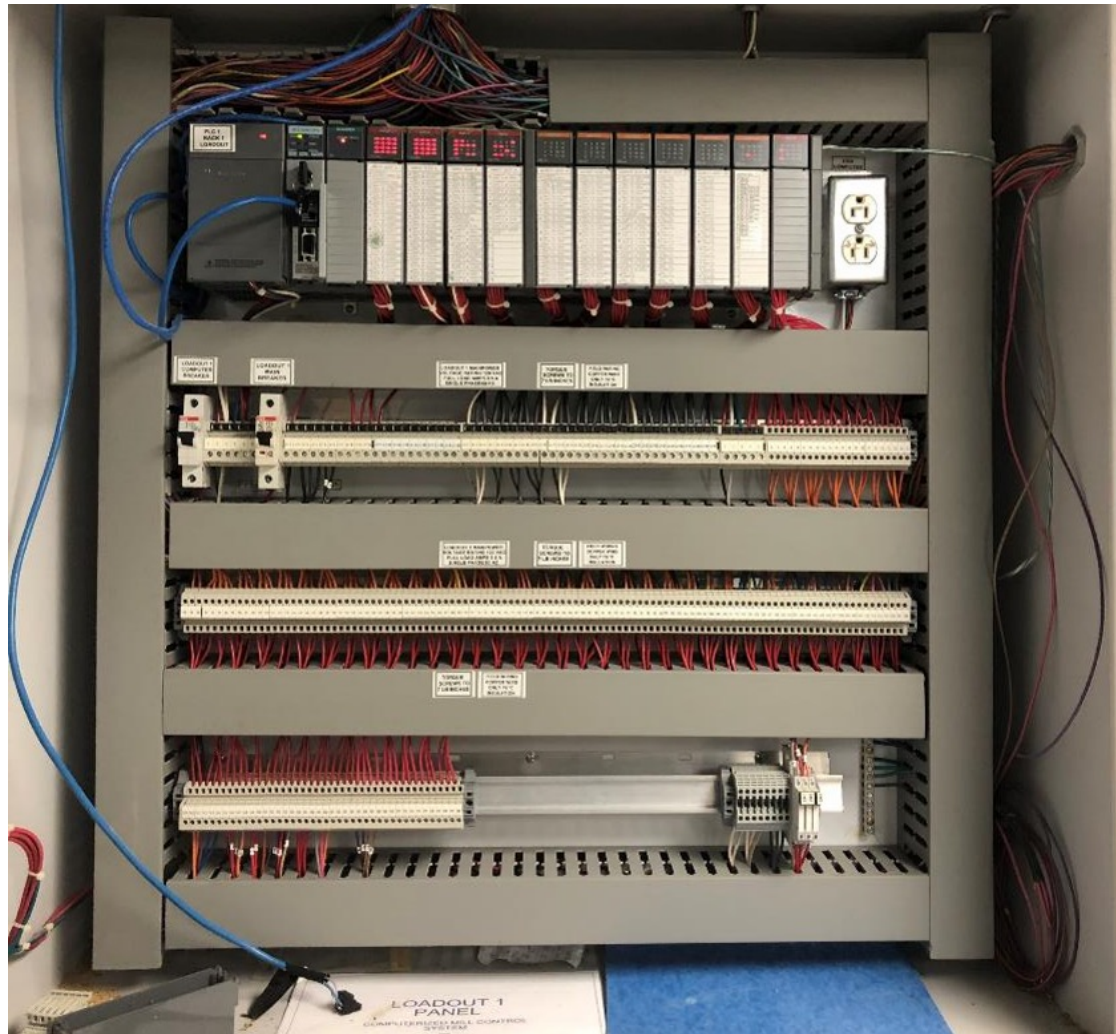
---

- Remove terminal blocks from existing SLC modules
  - Remove SLC rack
  - Mount new 5069 CompactLogix rack
  - Move wires from SLC terminal blocks to 5069 CompactLogix terminal block
- (Time Estimate: 5 hours for a 10 slot rack)

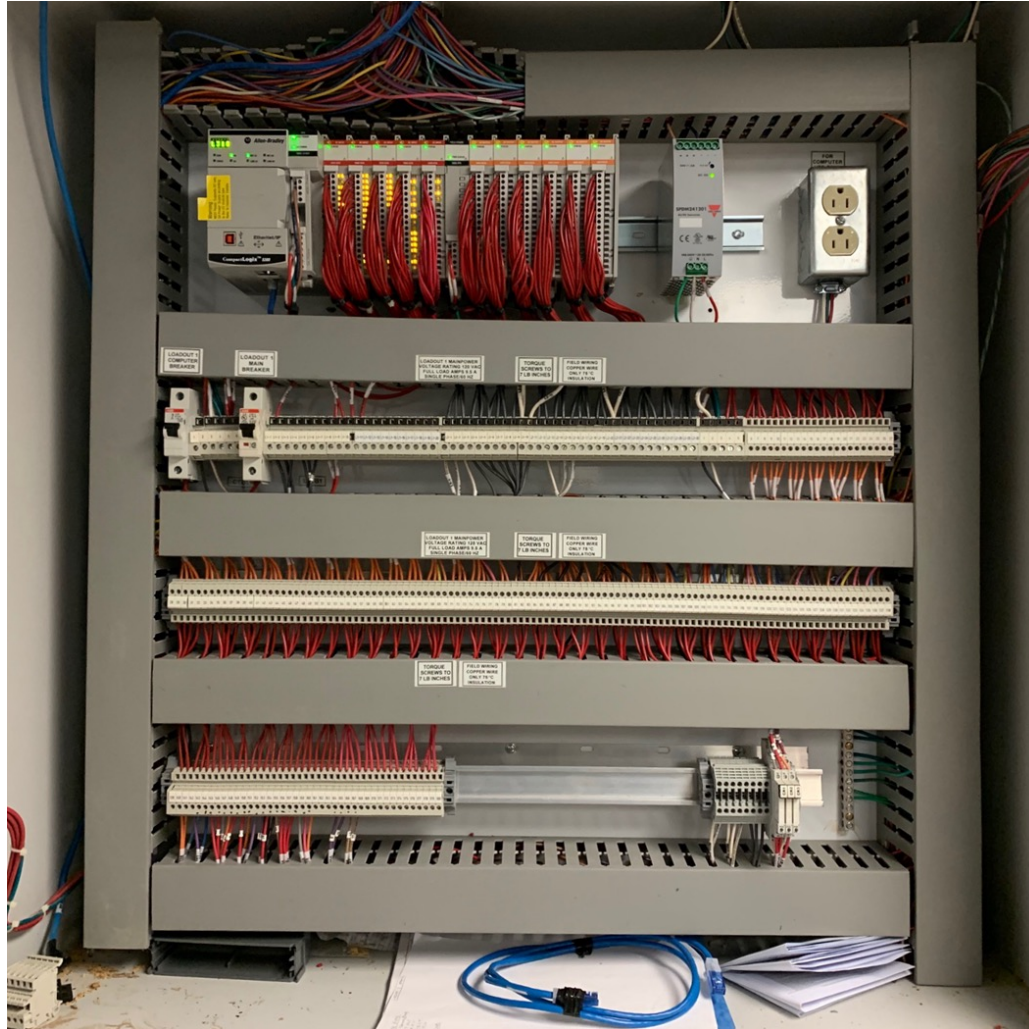




# SLC 500 PLC



# Logix 5000 PLC (Post Installation)



# Control System Suggestions

---

- VM (Virtual Machine) Server & Thin Client Workstations
  - More reliable than PCs
  - Easier to do software updates
- Immutable Backup & Replication Software
  - Prevents ransomware and malicious acts to affect the backups
  - Ensures that there is an untouched version of that source data that is always recoverable and safe from any failure scenario
- Windows Updates
  - Stay secure



# Thank You

Steve Buehne  
steve.buehne@cpm.net  
314-422-8024

