



## Emergency Response in Feed Mill and Grain Handling Facilities

---

GARRY PINHEIRO, ELITE SILO CLEANING, INC.

GEOFF HOLLAND, FOSTER FARMS DELHI FEED MILL




*An Ounce Of Prevention  
is Worth a Pound of  
Cure"*

*- Benjamin Franklin*



# What Emergencies Exist?

---

- Fire
  - Explosion
  - Medical Related
  - Homeland Security/Bioterrorism
  - Active Shooters
  - Railroad Related
  - Confined Space Rescue
- 



# What Types of Emergencies Exist?

---

➤ Fire

➤ Dust Explosion

➤ Medical Related

➤ Homeland Security/Bioterrorism

➤ Active Shooters

➤ Railroad Related

➤ Confined Space Entry/Rescue

# Pellet Cooler Fire

## August 21<sup>st</sup>, 2021

---











*An Ounce Of Prevention  
is Worth a Pound of  
Cure"*

*- Benjamin Franklin*



# Damage report.....

---

- Nine-Day Total Plant Shutdown (19,290 tons production lost)
- Significant Electrical and Communication Cabling Destroyed.
- Counterflow Cooler Sidewalls, Top, and Floor Destroyed
- Pellet Line down 87 days total while repairs were completed.
- Total Damage: \$ 863,458.

\*No Injuries to Team Members\*

Plant Evacuated in less than 5 Minutes




# What Did We Learn??

---

**This was a preventable emergency!!!**

**How can we do it better??**

- Modify Routine Housekeeping procedures and increase **verification of completion.**
  - **Document** the inspection pellet cooler tops weekly checking for leaks or spills.
  - Share the findings of the incident with team members, welcome their input on modifying housekeeping procedures, and help them understand and embrace why this was a preventable
- 

# What did we do??





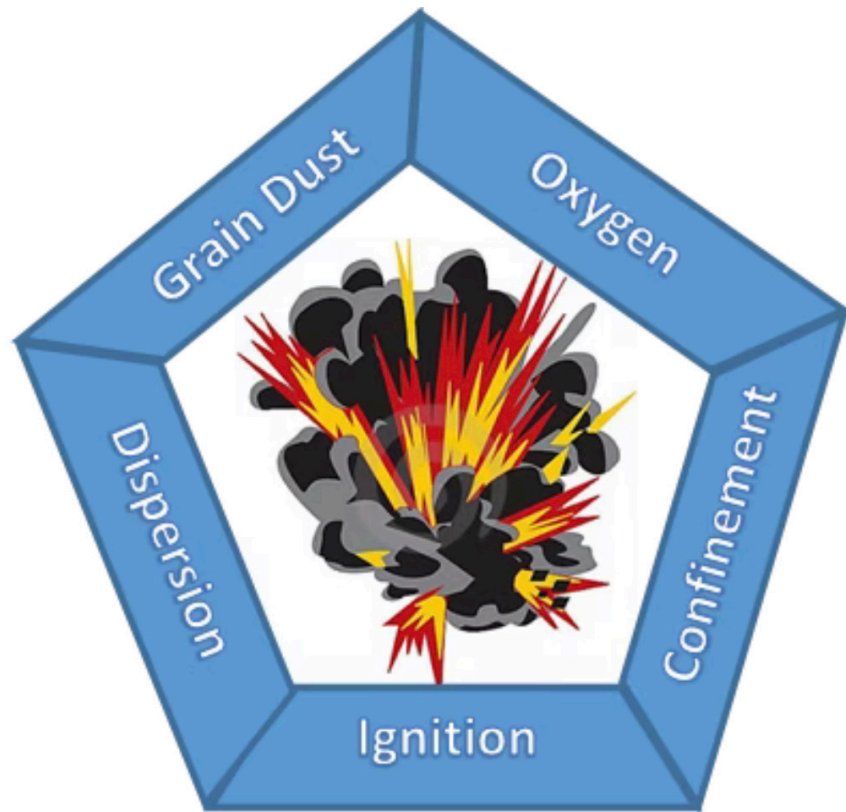
And, Most Importantly...

---

**No injuries.....**

Team members safely evacuated in  
less than five minutes...





# Grain Dust Explosions

---

# Grain dust Explosions **DO** happen

[Dashcam video captures explosion at grain elevator - YouTube](#)



# Preventive Measures

---

- Written, effective, and dynamic and housekeeping program.
- If you didn't write it down, it didn't happen!
- No "pencil whipping"
- Train team members on the importance of housekeeping
- Welcome and encourage suggestions from Team Members on how to improve the program.

*An Ounce Of Prevention  
is Worth a Pound of  
Cure"*

*- Benjamin Franklin*





# Confined Space Entry/Rescue

---



# Bin Inspection Project

---

# What are the hazards??

---

- Top bin entry on Boatswain's chair
- Lack of oxygen
- High work/potential falls
- Weather
- Powered Industrial Equipment






*An Ounce Of Prevention  
is Worth a Pound of  
Cure"*

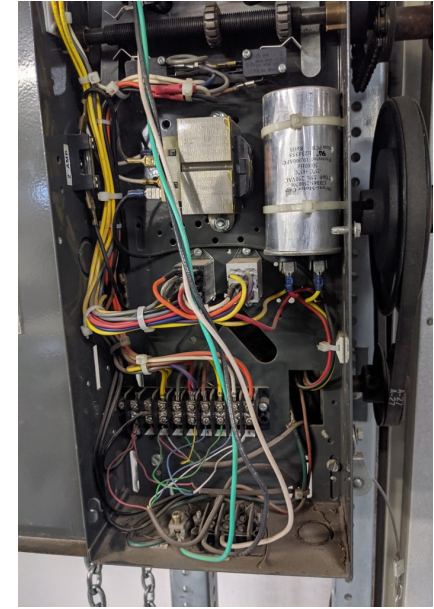
*- Benjamin Franklin*



# Plan to Complete the Inspection Safely!!

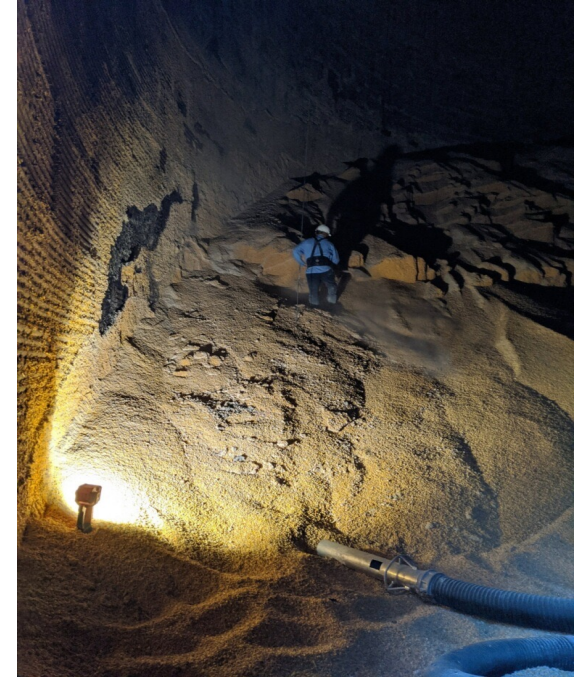
---

- Pre-inspection meetings and trainings.
  - Project Manager
  - Inspection Records of equipment
  - Certified operators
  - Written emergency action plan that is communicated and understood by all individuals involved in the project.
  - Involve your local Emergency Medical Services (EMS)
- 



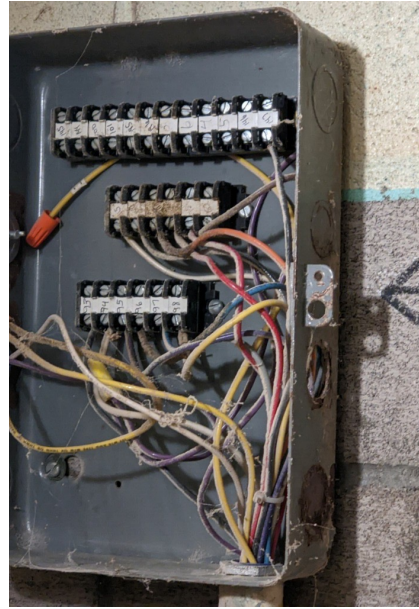
# What Hazards to you see?

---



How about this?





Any more potential hazards here??



Do you  
consider this a  
safe work  
environment?

---



Eliminate and  
Mitigate Hazards to  
create a safe work  
environment.

---



# SAFETY FIRST!!!!!!

---





# Questions???

---

