



MAKE THE ULTIMATE UPGRADE  
TO MAXILIFT



**THANK YOU!**  
**CALIFORNIA GRAIN AND**  
**FEED ASSOCIATION**

**MAXI-LIFT, A LEADER FOR INNOVATION IN**  
**THE INDUSTRY IS HONORED TO**  
**PARTICIPATE IN YOUR EDUCATIONAL**  
**PROGRAM**

***Welcome to...***  
***Maxi-Lift Inc.®***





*Traditional CC Style  
WITH THICKER WEAR POINTS*



■ Features and Benefits of CC-MAX ® Buckets:

- Typically the “starter” bucket
- Thicker Lip – Up to 20%
- More Capacity – Up to 5%
- Clean Discharge
- Resists Hang-Ups
- High Impact & Abrasion Resistant
- Non-Corrosive, Non-Sparking
- Extends Bucket Life
- Decreases Elevator Downtime
- Increase and Maintain Capacity Longer



***HIGHER CAPACITY MEANS HD-MAX  
ELEVATE MORE MATERIAL FASTER TO MEET HIGHER CAPACITY DEMANDS.***



■ **Features and Benefits of HD-MAX ® Buckets:**

- Thicker Walls, Heavy Front Lip for Digging
- Cleaner Discharge
- High Impact and Abrasion Resistant
- Non-Corrosive, Non-Sparking

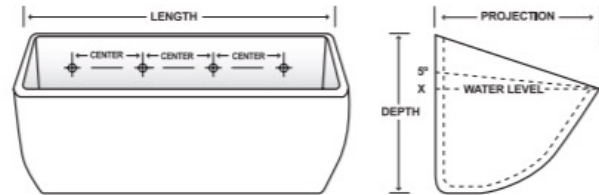
- Extends Bucket Life
- Increases Elevator Capacity
- Lowers Elevator Maintenance
- Decreases Elevator Down Time





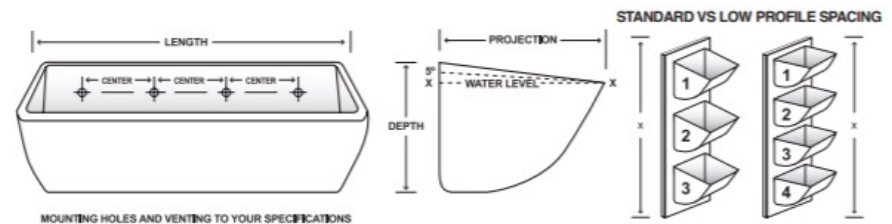
## TIGER-TUFF® STANDARD PROFILE

The **TIGER-TUFF** is the original maximum duty elevator bucket, designed and engineered to increase bucket life and reduce breakage. This will reduce down time and lower maintenance costs. The **TIGER-TUFF** bucket has the thickest lip, back wall and corners to extend the life of the bucket. The most common applications include grain, fertilizers, pellets, corn, wheat, soybeans and other agricultural and light industrial applications. This is the best bucket for high volume applications. The recommended belt width for a single row of buckets is actual bucket width plus 1".



## TIGER-TUFF® LOW PROFILE

The **TIGER-TUFF Low Profile** has all of the benefits of the original **TIGER-TUFF** bucket, with a reduced height modification for closer vertical spacing on the belt. The low profile system allows more buckets per foot of elevator belt. When upgrading to **TIGER-TUFF Low Profile** buckets, horsepower requirements must be evaluated due to increased capacity.



MOUNTING HOLES AND VENTING TO YOUR SPECIFICATIONS



Polyethylene



**Application:**

Grains & Food Products

**Temperature Range:**

-120°F to +180°F

(210°F intermittent)

**FDA Approved Material:**

Yes

**Comments:**

Economical, high density polyethylene. FDA approved material for handling food grade products.



Urethane



**Application:**

Heavy abrasion, sticky materials

**Temperature Range:**

-60°F to +180°F

(210°F intermittent)

**FDA Approved Material:**

Yes

**Comments:**

Most flexible and abrasion resistant. Resists product sticking and sharp cutting particles.



Nylon



**Application:**

Hot, high impact, abrasive dense products

**Temperature Range:**

-60°F to +300°F

(350°F intermittent)

**FDA Approved Material:**

No

**Comments:**

Best for high heat applications, with tough impact and abrasion needs.

***Maxi-Lift Inc.***®

ELEVATOR BUCKETS & ACCESSORIES

MAKE THE ULTIMATE UPGRADE  
TO MAXILIFT





***Maxi-Lift Inc.***<sup>®</sup>  
ELEVATOR BUCKETS & ACCESSORIES

MAKE THE ULTIMATE UPGRADE  
TO MAXILIFT



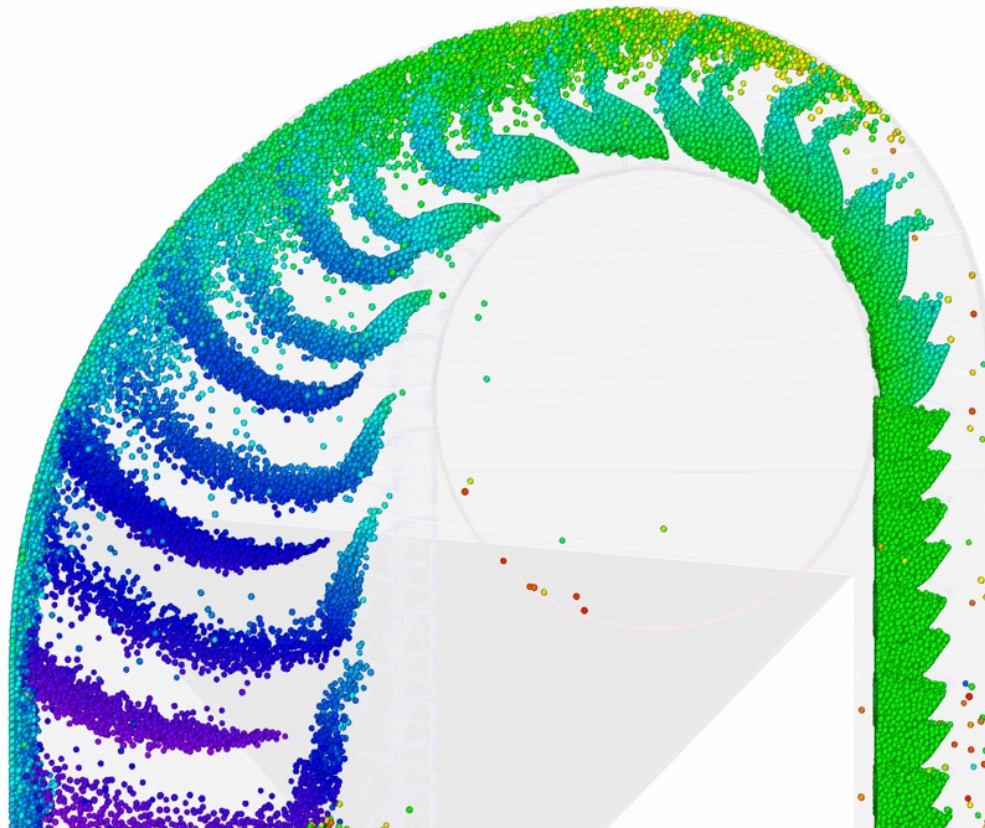
# BUCKET ELEVATORS

HOW DO YOU GET THE MOST PRODUCTION POSSIBLE?

**Maxi-Lift Inc.**



Typical throw  
Pattern for  
High Speed  
Grain Leg



WWW.MAXILIFT.COM: YOUR SOURCE FOR BUCKETS & ACCESSORIES







***Maxi-Lift Inc.***<sup>®</sup>

ELEVATOR BUCKETS & ACCESSORIES

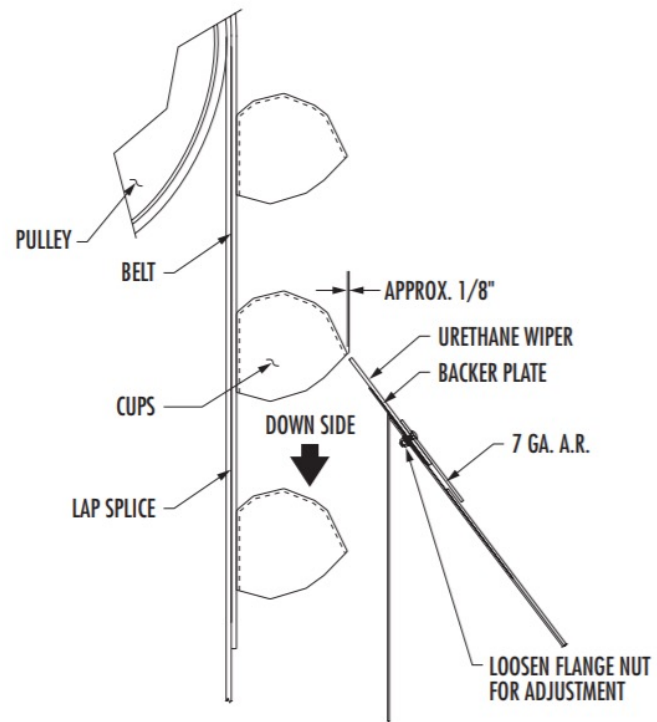
MAKE THE ULTIMATE UPGRADE  
TO MAXILIFT



# UNDERSTANDING THE VALUE OF THE THROAT PLATE

THIS SMALL ITEM IS VITAL!





**Maxi-Lift**

ELEVATOR BUCKETS & ACCESSORIES



ATE UPGRADE  
TO MAXILIFT



***Maxi-Lift Inc.***®

ELEVATOR BUCKETS & ACCESSORIES

MAKE THE ULTIMATE UPGRADE  
TO MAXILIFT



**Maxi-Lift**

ELEVATOR BUCKETS & ACCESSORIES



**MAXI-LIFT  
ELEVATOR BUCKETS & ACCESSORIES  
COMPLETE UPGRADE  
TO MAXILIFT**





***Maxi-Lift Inc.***<sup>®</sup>

ELEVATOR BUCKETS & ACCESSORIES

MAKE THE ULTIMATE UPGRADE  
TO MAXILIFT





***Maxi-Lift Inc.***<sup>®</sup>

ELEVATOR BUCKETS & ACCESSORIES

MAKE THE ULTIMATE UPGRADE  
TO MAXILIFT





MAKE THE ULTIMATE UPGRADE  
TO MAXILIFT



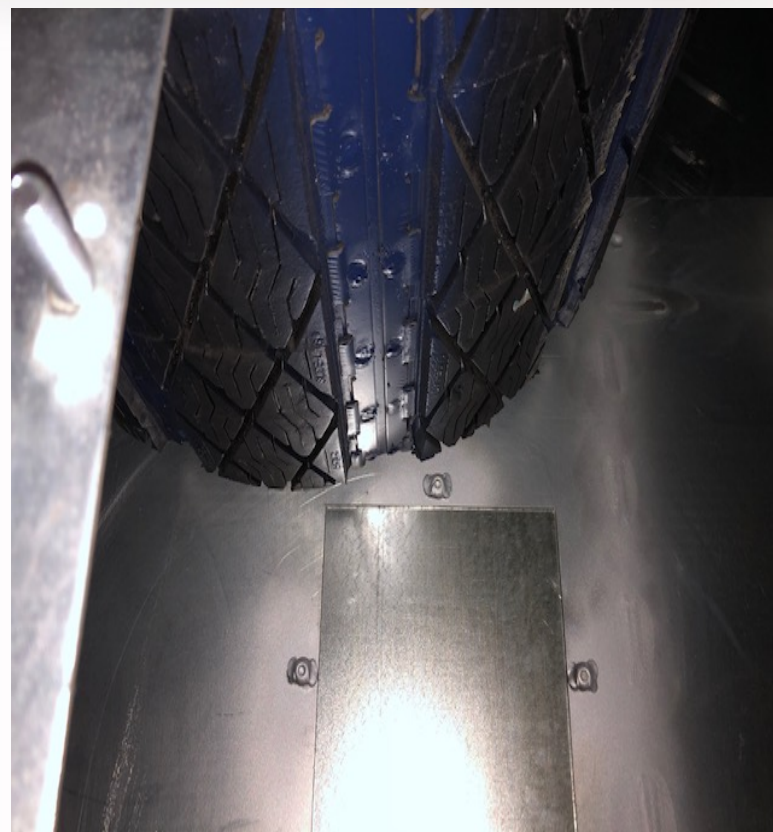
# HEAD PULLEY LAGGING

FOR TRACTION AND TRACKING

***Maxi-Lift Inc.***<sup>®</sup>

ELEVATOR BUCKETS & ACCESSORIES

MAKE THE ULTIMATE UPGRADE  
TO MAXILIFT





***Maxi-Lift Inc.***<sup>®</sup>

ELEVATOR BUCKETS & ACCESSORIES

MAKE THE ULTIMATE UPGRADE  
TO MAXILIFT





MAKE THE ULTIMATE UPGRADE  
TO MAXILIFT



# BUCKET ELEVATOR BOOT

EVERYTHING MUST START RIGHT AT THE BOTTOM



***Maxi-Lift Inc.***<sup>®</sup>

ELEVATOR BUCKETS & ACCESSORIES

MAKE THE ULTIMATE UPGRADE  
TO MAXILIFT



***Maxi-Lift Inc.***<sup>®</sup>

ELEVATOR BUCKETS & ACCESSORIES

MAKE THE ULTIMATE UPGRADE  
TO MAXILIFT



***Maxi-Lift Inc.***<sup>®</sup>

ELEVATOR BUCKETS & ACCESSORIES

MAKE THE ULTIMATE UPGRADE  
TO MAXILIFT



# A PROBLEM AT THE BOOT MIGHT BE CAUSED FROM A LONG WAY AWAY

BUCKET ELEVATORS PERFORMANCE CAN BE INFLUENCED  
BY OTHER EQUIPMENT AT THE INLET AND DISCHARGE



**Maxi-Lift Inc.**

ELEVATOR BUCKETS & ACCESSORIES



ULTIMATE UPGRADE  
TO MAXILIFT



SINGLE SOURCE



***Maxi-Lift Inc.***<sup>®</sup>

ELEVATOR BUCKETS & ACCESSORIES

MAKE THE ULTIMATE UPGRADE  
TO MAXILIFT



***Maxi-Lift Inc.***®

ELEVATOR BUCKETS & ACCESSORIES

MAKE THE ULTIMATE UPGRADE  
TO MAXILIFT





***Maxi-Lift Inc.***®

ELEVATOR BUCKETS & ACCESSORIES

MAKE THE ULTIMATE UPGRADE  
TO MAXILIFT





# BUCKET VENTING CAN HELP AIR FLOW

IT CAN HELP BUCKET FILL AND DISCHARGE AS WELL



***Maxi-Lift Inc.***<sup>®</sup>

ELEVATOR BUCKETS & ACCESSORIES

MAKE THE ULTIMATE UPGRADE  
TO MAXILIFT

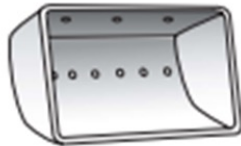


# ***Bucket Venting***

**#1 VENT** - Same holes in body as bolt mounting holes.



**#2 VENT** - One row of holes on 1-1/8" centers



**#3 VENT** - Two rows of holes on 1-1/8" centers



**#4 VENT** - Same as #3, plus three holes in each end cap.



**CUSTOM VENT** - Vented as required



- Aids in fill and discharge in light, fluffy or poor flowing material.
- Service is provided at no to minimal cost.
- It is virtually impossible to have too much venting.
- When in doubt, Vent!



# “ONE OR TWO BUCKETS BREAK ONCE IN A WHILE”

DIAGNOSING PROBLEMS CAN BE DIFFICULT

***Maxi-Lift Inc.***®

ELEVATOR BUCKETS & ACCESSORIES

MAKE THE ULTIMATE UPGRADE  
TO MAXILIFT





***Maxi-Lift Inc.***<sup>®</sup>

ELEVATOR BUCKETS & ACCESSORIES

MAKE THE ULTIMATE UPGRADE  
TO MAXILIFT



COMPARE THE BOOT SHAFT TO THE INLET POSITION OF E4 AND E5



**Maxi-Lift Inc.**

ELEVATOR BUCKETS & ACCESSORIES

MAKE THE ULTIMATE UPGRADE  
TO MAXILIFT



**“EVERYTHING’S FINE. WE  
DON’T NEED AN  
INSPECTION.”**

**AN INSPECTION IS JUST THE START.  
NORMALLY ACTION MUST FOLLOW!**



***Maxi-Lift Inc.***<sup>®</sup>

ELEVATOR BUCKETS & ACCESSORIES

MAKE THE ULTIMATE UPGRADE  
TO MAXILIFT





***Maxi-Lift Inc.***®

ELEVATOR BUCKETS & ACCESSORIES

MAKE THE ULTIMATE UPGRADE  
TO MAXILIFT



***Maxi-Lift Inc.***®

ELEVATOR BUCKETS & ACCESSORIES

MAKE THE ULTIMATE UPGRADE  
TO MAXILIFT



***Maxi-Lift Inc.***<sup>®</sup>

ELEVATOR BUCKETS & ACCESSORIES

MAKE THE ULTIMATE UPGRADE  
TO MAXILIFT





***Maxi-Lift Inc.***<sup>®</sup>

ELEVATOR BUCKETS & ACCESSORIES

MAKE THE ULTIMATE UPGRADE  
TO MAXILIFT







MAKE THE ULTIMATE UPGRADE  
TO MAXILIFT



# USE YOUR SMART PHONE TO INSPECT MOVING BUCKETS

THE SLOW-MOTION VIDEO FEATURE IS VALUABLE

***Maxi-Lift Inc***

ELEVATOR BUCKETS & ACCESSORIES



ULTIMATE UPGRADE  
TO MAXILIFT





MAKE THE ULTIMATE UPGRADE  
TO MAXILIFT



# BELTING OPTIONS

AND BELT MAINTENANCE!

**Product Construction:** Plied Polyester/Nylon fabric w/ NBR formulated Grain Handling Compound.

**Special Standards:** Fire resistant to MSHA 2G/ASTM D378. Static Resistivity to ISO 284.

**Top / Bottom Cover:** 1/16" Smooth Rubber, Black



**RUB 220** 2 PLY, 1/16 x 1/16 SOR-SC-FR  
(EP400/2 1.5 + 1.5 NBR)



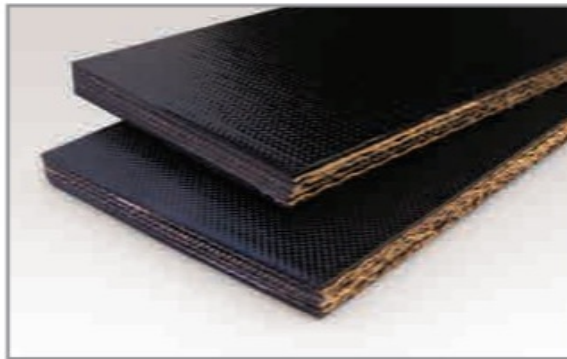
**RUB 330** 3 PLY, 1/16 x 1/16 SOR-SC-FR  
(EP600/3 1.5 + 1.5 NBR)



**RUB 440** 4 PLY, 1/16 x 1/16 SOR-SC-FR  
(EP600/3 1.5 + 1.5 NBR)



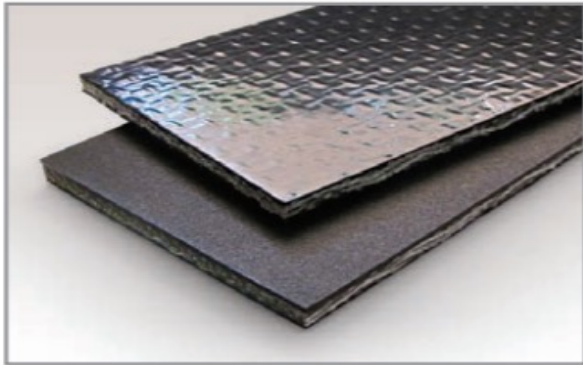
**RUB 600** 3 PLY, 1/16 x 1/16 SOR-SC-FR  
(EP1050/3 1.5 + 1.5 NBR)



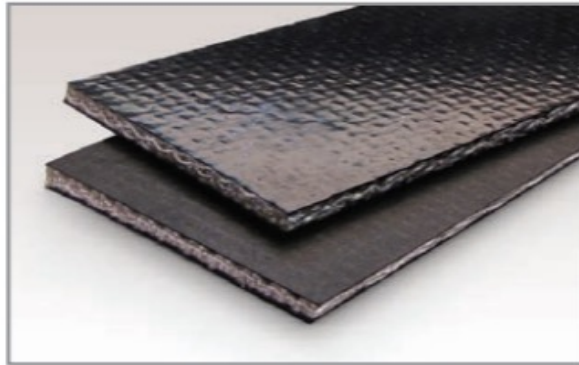
**RUB 800** 4 PLY, 1/16 x 1/16 SOR-SC-FR  
(EP1400/4 1.5 + 1.5 NBR)



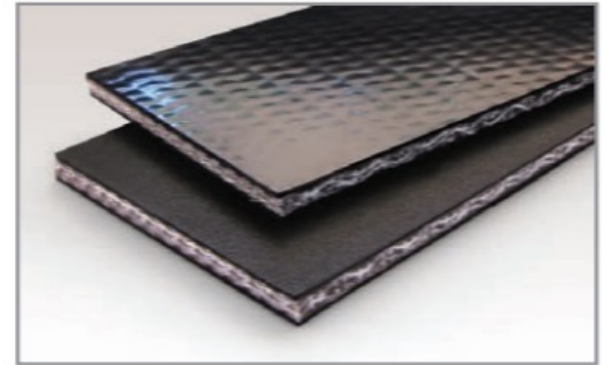
**Product Construction:** Solid woven polyester carcass with black PVC top and bottom covers.  
**Special Standards:** Fire resistant to MSHA 2G/ASTM D378. Static conductive to OSHA 29 CFR.  
**Top / Bottom Cover:** Smooth PVC, Black



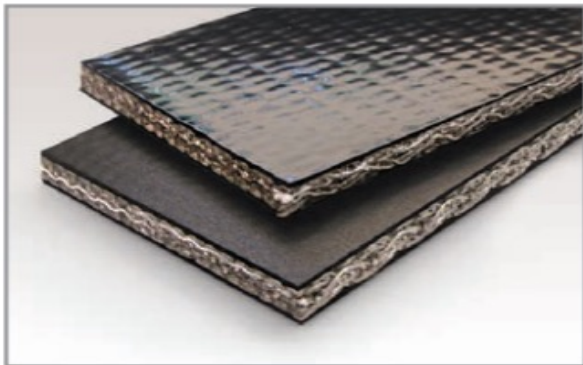
**PVC 200** Black PVC Cover x Cover



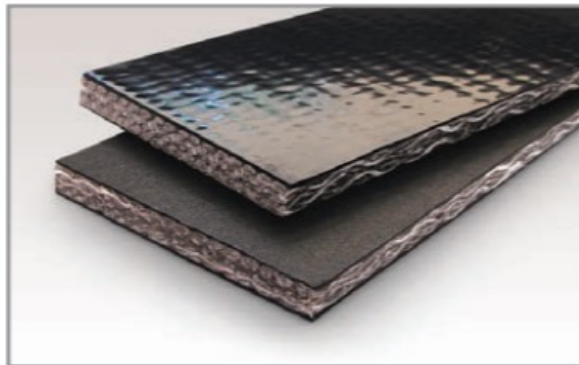
**PVC 250** Black PVC Cover x Cover



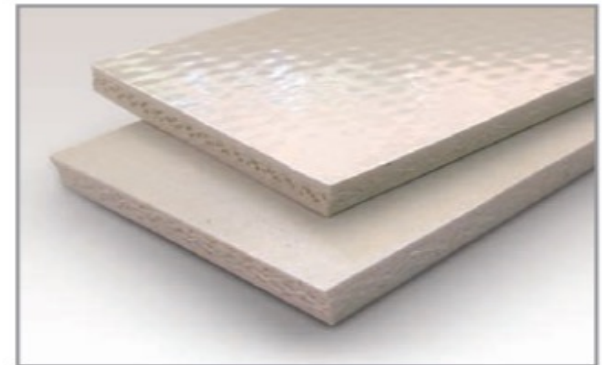
**PVC 350** Black PVC Cover x Cover



**PVC 450** Black PVC Cover x Cover



**PVC 600** Black PVC Cover x Cover



**PVC 200, 350, 450** White PVC Cover x Cover  
Also available in FDA White

***Maxi-Lift Inc.***<sup>®</sup>

ELEVATOR BUCKETS & ACCESSORIES

MAKE THE ULTIMATE UPGRADE  
TO MAXILIFT





***Maxi-Lift Inc.***<sup>®</sup>

ELEVATOR BUCKETS & ACCESSORIES

MAKE THE ULTIMATE UPGRADE  
TO MAXILIFT



***Maxi-Lift Inc.***<sup>®</sup>

ELEVATOR BUCKETS & ACCESSORIES

MAKE THE ULTIMATE UPGRADE  
TO MAXILIFT



# BELT HARDWARE

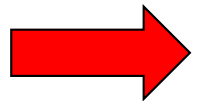
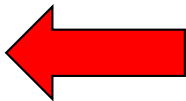
MECHANICAL SPLICES AND ELEVATOR BOLTS

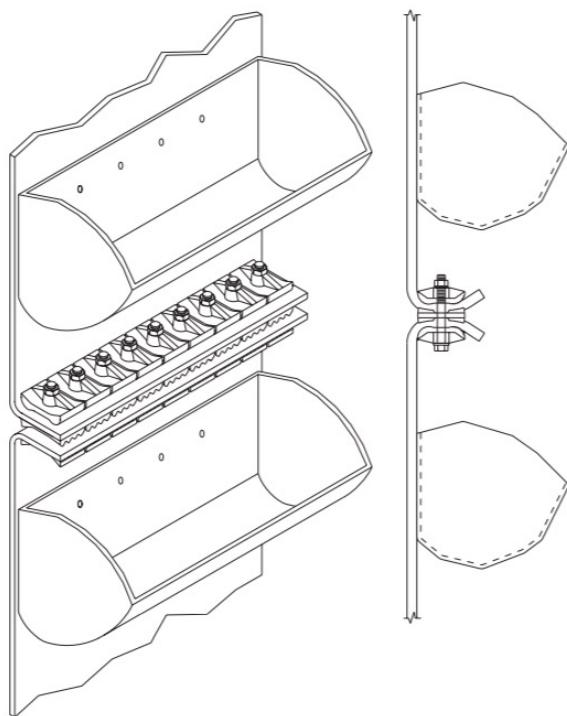


# Belt Splices

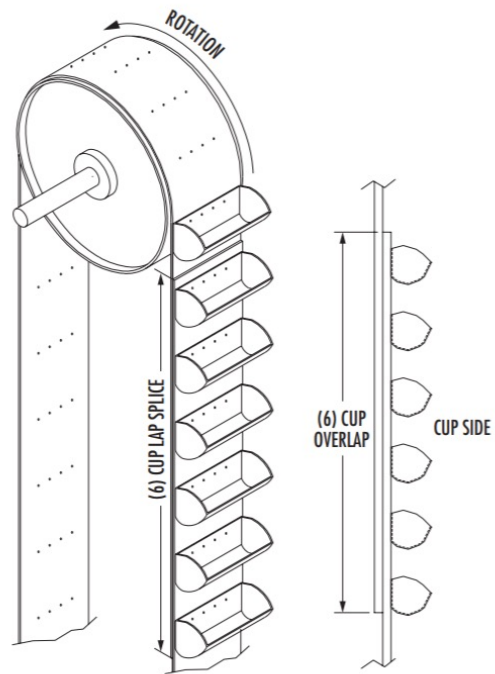
Belt Splices are used to hold and feed the belts as they move. Here at Maxi-Lift, mechanical belt splices are made. Lap splices are a thing of the past due to more modern concrete designs, and that's where mechanical splices come in play. Not only are they more efficient, but are safer as well. Overall, mechanical splices offer improved structural integrity, no reliance on concrete for load transfer, elimination of lap-splice calculation, reduced material costs, and reduced rebar congestion.

When working with a belt and a belt splice, check the width of the belt as well as the width of the splice. If the width of the splice is 2" and the width of the belt is 10", 5 splices should fit on the belt. If the width of the belt is 11" and the width of the splice is 2", there should still only be 5 splices on the belt, an extra splice should not be added otherwise it will hang off and be a safety issue.





# OVERLAP BELT SPlice



***Maxi-Lift Inc.***<sup>®</sup>

ELEVATOR BUCKETS & ACCESSORIES

MAKE THE ULTIMATE UPGRADE  
TO MAXILIFT







## NUTS

### STANDARD HEX



SIZE, INCHES (ID)	PKG. QTY., PCS.	PKG. WEIGHT, LBS.
1/4-20	100	0.7
5/16-18	100	1.1
3/8-16	100	1.6
1/2	100	3.8

Available in zinc and stainless.

### STANDARD FLANGE SERRATED LOCK



SIZE, INCHES (ID)	PKG. QTY., PCS.	PKG. WEIGHT, LBS.
1/4-20	100	0.9
5/16-18	100	1.2
3/8-16	100	1.8

Available in zinc and stainless.

### LARGE FLANGE SERRATED LOCK



SIZE, INCHES (ID)	PKG. QTY., PCS.	PKG. WEIGHT, LBS.
1/4-20	100	1.2
5/16-18	100	2.3
3/8-16	100	2.8

Available in zinc.

### NYLON INSERT LOCK

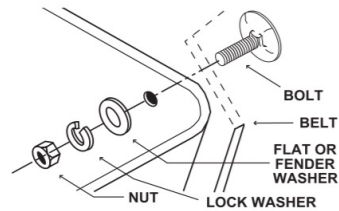


SIZE, INCHES (ID)	PKG. QTY., PCS.	PKG. WEIGHT, LBS.
1/4-20	100	0.8
5/16-18	100	1.1
3/8-16	100	2.8

Available in zinc and stainless.

## RECOMMENDED BUCKET INSTALLATION

A locking device should be used on all elevator bucket installations.



## WASHERS AND SPACERS

### FLAT



SIZE, INCHES (ID)	PKG. QTY., PCS.	PKG. WEIGHT, LBS.	O.D. INCHES
1/4	100	1.3	1
5/16	100	2.0	7/8
3/8	100	3.0	1
1/2	100	3.8	1-3/8

Available in stainless.

### SPLIT RING LOCK



SIZE, INCHES (ID)	PKG. QTY., PCS.	PKG. WEIGHT, LBS.	O.D. INCHES
1/4	100	0.2	1-1/4
5/16	100	0.4	7/8
3/8	100	0.6	1
1/2	100	1.4	1-3/8

Available in zinc and stainless.

### FENDER\*



SIZE, INCHES (ID)	PKG. QTY., PCS.	PKG. WEIGHT, LBS.	O.D. INCHES
1/4	100	1.3	1
Large 1/4	100	1.3	1-1/4
5/16	100	2.0	7/8
Large 5/16	100	3.0	1-1/2
3/8	100	3.0	1-1/2
1/2	100	3.8	1-3/8

Available in zinc and stainless.

\*When installing urethane buckets always use Fender Washers.

### LEATHER



SIZE, INCHES (ID)	PKG. QTY., PCS.	PKG. WEIGHT, LBS.	O.D. INCHES
1/4	100	0.3	1
5/16	100	0.3	1
3/8	100	0.3	1

### POLY SPACERS



SIZE, INCHES (ID)	PKG. QTY., PCS.	PKG. WEIGHT, LBS.	O.D. INCHES
1/4	100	2.0	-
5/16	100	1.8	-

Available in 1/4" and 1/2" thick.

### NEOPRENE



SIZE, INCHES (ID)	PKG. QTY., PCS.	PKG. WEIGHT, LBS.	O.D. INCHES
1/4	100	1.1	-
5/16	100	1.1	-
3/8	100	1.1	-

Available in 1/4" thick.

**Maxi-Lift Inc.**  
ELEVATOR BUCKETS & ACCESSORIES

MAKE THE ULTIMATE UPGRADE  
TO MAXILIFT



## **AGRICULTURAL**

### **A COMPLETE RANGE OF AGRICULTURAL BUCKETS:**

TIGER-TUFF MAXIMUM DUTY  
TIGER-CC MAXIMUM DUTY  
HD-MAX HEAVY DUTY  
CC-MAX HEAVY DUTY  
DURA-BUKET STANDARD DUTY  
AND MORE...



***Maxi-Lift Inc.***®

ELEVATOR BUCKETS & ACCESSORIES

MAKE THE ULTIMATE UPGRADE  
TO MAXILIFT

