

**From:** [Ag Association Management Services, Inc](#)  
**To:** [Donna Boggs](#)  
**Subject:** Association Update on COVID-19 Situation  
**Date:** Friday, March 20, 2020 9:31:51 AM

March 20, 2020





## Employer Resources: Sample Letter for Employees of Essential Services

As you may be aware, California Governor Newsom yesterday issued a statewide [Stay at Home Order](#) for all residents in California. We recognize this order may create some challenges and confusion for both employers and employees of businesses deemed as essential in this crisis.

We are providing below a sample letter that California food and agriculture businesses may find useful to share with employees. We encourage you to personalize this letter to provide your employees with any specific information about additional safety precautions in place to protect their health and to outline any services, such as childcare, that may be available to them.

Although the Governor's order directs all individuals living in the State of California to stay home or at their place of residence, it specifically states this does not apply to employees of operations determined critical infrastructure sectors, which includes agriculture. Yesterday, we provided information from the Department of Homeland Security outlining what types of businesses qualify for exemptions from orders such as the one issued in California yesterday. You can find that list [here](#).

Governor Newsom has emphasized that Californians working in 16 critical infrastructure sectors-which includes food and agriculture-may continue their work because of the importance of these sectors to Californians' health and well-being. It is critically importantly the food supply be maintained.

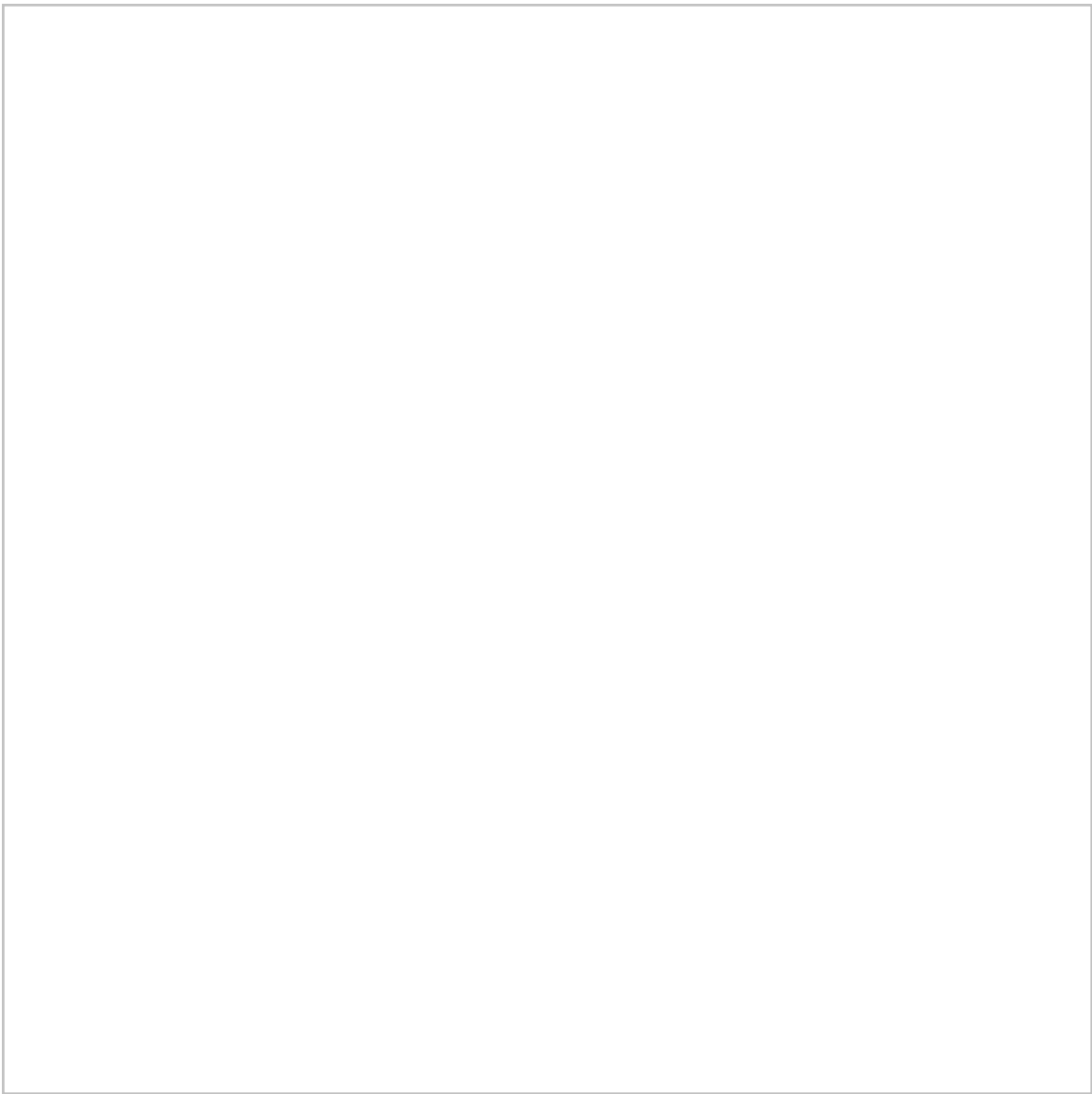
### [Sample Letter to Employees](#)

## AAMSI Office Closed

Please note that the offices of Ag Associations Services Inc, will be closed in accordance with this new order. However, we will be regularly checking voicemail and all staff is working remotely. Please feel free to reach out to any of us with questions or concerns. Thank you.

## CDFA Website Adds Coronavirus Resource Section

The California Department of Food and Agriculture has added a new section to its website with information for California's agriculture industry. This can be found [here](#). We suggest you bookmark this and visit regularly for updates.



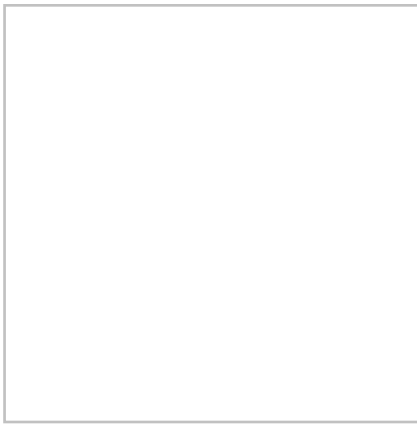
**Ag Association Management Services, Inc.** | 916.441.1064 | 1521 I Street | Sacramento, CA 95814

Ag Association Management Services, Inc | 1521 I Street, Sacramento, CA, CA 95814

[Unsubscribe donna@agamsi.com](mailto:unsubscribe_donna@agamsi.com)

[Update Profile](#) | [About Constant Contact](#)

Sent by chris@agamsi.com in collaboration with



Try email marketing for free today!

